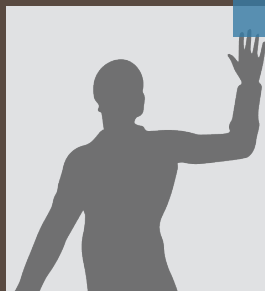
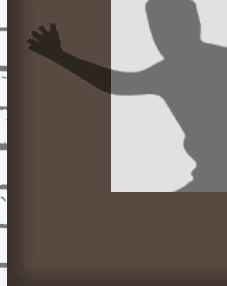
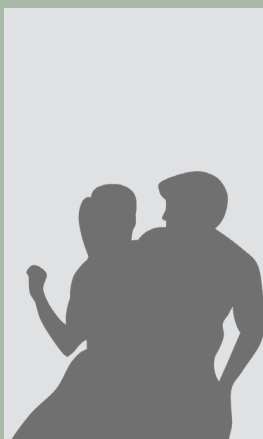




NHS  
NEW HAVEN

2020  
ANNUAL  
MEETING





# BUILDING STRONGER COMMUNITIES

JPMorgan Chase is committed to investing in communities so diverse individuals and families of all income levels can thrive. We work with a group of partners to provide creative and innovative solutions that respond to community development, affordable housing needs and inclusive economic growth. These partnerships are essential to making a meaningful impact on communities, their residents and businesses.

We proudly support Neighborhood Housing Services of New Haven.

JPMORGAN CHASE & CO.

# #AloneTogether

**From our homes to our neighbors' homes, we've overcome the novel challenges of this year to bring our services to the community and move forward together.**

Neighborhood Housing Services of New Haven strengthens neighborhoods by developing affordable housing and increasing homeownership opportunities; providing homebuyer education and financial coaching; making homes safe, beautiful and energy efficient; and working to improve the perceptions of the communities in which we are working by helping residents take charge of their neighborhoods.



Amity Station  
P.O. Box 4008  
New Haven, CT 06525-0008

**JULIE THALEN**  
ATTORNEY AT LAW

Tel: (203) 393-9210  
Fax: (203) 393-9230  
E-Mail: [julie@juliethalen.com](mailto:julie@juliethalen.com)

# BECAUSE HELPING OTHERS *is what matters most.*

Every day, you help make our community a better place to live. So we do our best to live up to you, your organization and the people you serve. We're always proud to support what matters most to our neighbors.



 Webster Bank, the Webster Bank logo and the W symbol are trademarks of Webster Financial Corporation and Registered in the U.S. Patent and Trademark Office. Webster Bank, N.A. Member FDIC. © 2020 Webster Financial Corporation. All Rights Reserved.



**Proud to support**  
Neighborhood Housing  
Services of New Haven.

**ionBANK™**

**IonBank.com • 203.729.4442**

Member FDIC

**DILEO & RITUCCI, INC.**

Louis Ritucci

28 Fox Den Way, Woodbridge CT  
203-387-7428 [louis.ritucci@yahoo.com](mailto:louis.ritucci@yahoo.com)

*Building & Remodeling since 1986  
Licensed & Insured*

# YOU'RE READY TO MAKE A DIFFERENCE AND SO ARE WE

Citizens is pleased to support NHS New Haven.  
Thank you for all you do for our community!

For more information, or to see how you can help, go to [citizensbank.com/community](https://citizensbank.com/community)

Member FDIC. Citizens is a brand name of Citizens Bank, N.A. 1355039



(860) 663-0110  
(203) 925-9600

**Darin L. Offerdahl, MBA, CPA**  
[dofferdahl@aococpas.com](mailto:dofferdahl@aococpas.com)



**Maureen A. Frank**

*President & Chief Executive Officer*

299 Whalley Avenue  
New Haven, CT 06511

Tel: 203.285.6486

Fax: 203.773.3237

[mfrank@newhavenbank.com](mailto:mfrank@newhavenbank.com)  
[newhavenbank.com](https://newhavenbank.com)

## We are proud to support the **Neighborhood Housing Services of New Haven**

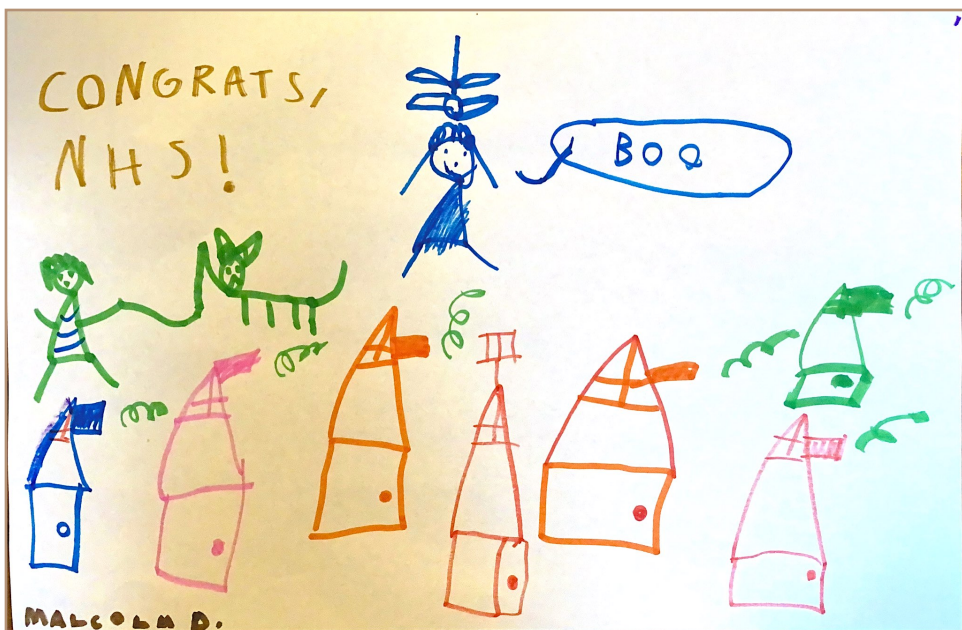


*What know-how can do®*

**Let's Talk.**

 [www.peoples.com](https://www.peoples.com)

 800 772 1090



In a challenging and uncertain year, Neighborhood Housing Services of New Haven continued to provide homeownership opportunities and support to the residents of New Haven. In the past 41 years, their work has transformed the landscape of New Haven and has provided homes to hundreds of families. At last year's annual meeting, several of those families shared their stories and expressed their gratitude to NHS as their lives changed by becoming homeowners in beautifully renovated houses.

NHS represents the power of community and a love for the City of New Haven. We could not be more proud of their work, which is more vital than ever amid a global pandemic.

Congratulations to NHS for 41 years of changing lives. And congratulations to Jim Paley for his leadership during this difficult and unprecedented time. We look forward to celebrating - in person - next year and for many years to come!

With love and admiration,  
Erica and Daniel

# Our Program

## Welcome

*Leslie Radcliffe, President, NHS New Haven Board of Directors*

## Congratulatory Remarks

*Senator Richard Blumenthal*

*Senator Chris Murphy*

*Rep. Rosa DeLauro*

*Mayor Justin Elicker*

*Jim Word, Senior Regional Relationships Manager,  
NeighborWorks America*

## Keynote Speaker

*Our lead sponsor, JPMorgan & Chase Co.*

*Monica Nation, Regional Director*

## Updates from the NHS Team

*Jim Paley, Executive Director, NHS New Haven*

*Michael Haynes, Director of Real Estate Development*

*Bridgette Russell, Managing Director of The HomeOwnership Center*

*Robin Ladouceur, HomeOwnership Center Coordinator*

*Stephen Cremin-Endes, Director of Community Building & Organizing*

*Kathy Fay, Director of Community Sustainability*

## Election of new and/or returning members of the Board of Directors\*

*Mina Minelli, NHS New Haven Board of Directors*

\*The NHS Nominating Committee has obtained consent of all candidates listed below to have their name submitted for election to the NHS New Haven and New Haven HomeOwnership Center Boards of Directors at their 2020 Annual Meeting. The endorsed slate for new two-year terms is as follows:

Residents: Doreen Abubakar\*\*, Devin Avshalom-Smith, Samantha Fawcett, Monika Mittelhölzer, Jacquelyn Pheanious\*\*, Leslie Radcliffe\*\*, Virginia Stevenson\*\*

Lenders: Carol Heller (Bank of America)\*\*

Attorney: Liam Brennan

\*\*NHS and HOC Boards





Make a gift at  
[cfgnh.org/covid19fund](https://cfgnh.org/covid19fund)

See grants made at [cfgnh.org/covid19fundgrants](https://cfgnh.org/covid19fundgrants)



The **COMMUNITY** Foundation  
for Greater New Haven



Yale  
NewHaven  
**Health**  
Yale New Haven  
Hospital

Yale New Haven Hospital  
is proud to support  
Neighborhood  
Housing Services

Yale New Haven Hospital has  
been honored to care for this  
community for more than 185  
years. We are proud to be part of  
a rich tapestry in which so many  
organizations work together for  
the entire community.

14374 (10/20)

# Yale

## Contributing to a Strong New Haven

*[onha.yale.edu](https://onha.yale.edu)*

## LISC CONNECTICUT

Since 1984, LISC has worked with residents  
and partners to forge resilient and inclusive  
communities of opportunity across Connecticut.



**LISC CT congratulates NHS of New Haven  
on its 41 years serving the community!**

[www.lisc.org/connecticut](https://www.lisc.org/connecticut)



MIKE GIULIANO  
Bus. & Res. 393-1438  
Fax 393-0118

**North Haven Sewer Co.**

94 SCHAEFFER RD.  
BETHANY, CT 06524-3316





## Powerful Partners

Serving our communities means providing reliable, essential electricity and natural gas service. It also means investing our energy in the organizations and events that make our communities special. We are pleased to support the Neighborhood Housing Services of New Haven.



canvacuumandjet@gmail.com

**CANVACUUM & JET**

**COREY NEWTON**  
Environmental Specialist

Asbestos Removal • Catch Basin Debris Removal • Dirt Removal • General Contractor  
High Pressure Jetting • Lead Abatement • 24 Hour Emergency Service • Demolition

C 203-654-5663 P 475-202-7778 F 475-202-7807  
[INFO@CVANDJ.COM](mailto:info@cvandj.com) [f/CVANDJ](https://www.facebook.com/CVANDJ) [@CVANDJ](https://twitter.com/CVANDJ)

CVANDJ.COM



**R. Proto LLC**  
**Plumbing & Heating**

New Construction • Remodeling  
Commercial • Residential  
New Technology with Old School Knowledge

Cell: 203-668-9510

Ron Proto  
Owner

Lic. P-1202891  
S-7307149



## Ready to buy your first home?

[www.chfa.org](http://www.chfa.org)



## **Thank You to Our Generous Sponsors:**

### **Lead**

JPMorgan Chase

### **Advocate**

Jeremy Paley, Erica Paley & Families  
Seedlings Foundation

### **Partner**

People's United Bank

### **Friend**

Webster Bank

### **Neighbor**

Avangrid  
Bank of America  
Citizens Bank  
Connecticut Housing Finance Authority  
George J. Smith & Son Insurance  
Yale New Haven Hospital  
Yale University

### **Ally**

AO & Company  
Can Vacuum & Jet, LLC  
The Community Foundation for Greater New Haven  
DiLeo & Ritucci, Inc.  
Ion Bank  
Julie Thalen  
LISC Connecticut  
New Haven Bank  
North Haven Sewer  
Ronald Proto, LLC



Thank you for your  
continued support